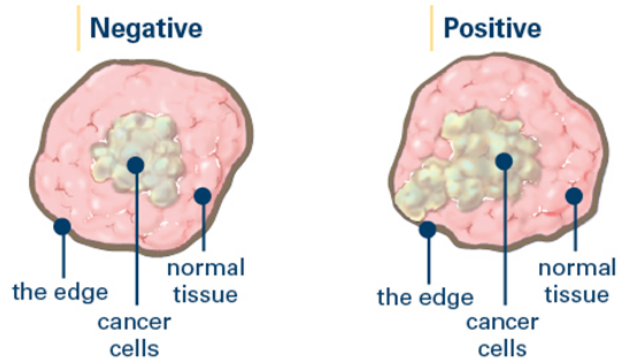


<p style="text-align: center;"><b><u>Lumpectomy</u></b> (Breast Conserving Surgery)</p> <p>Surgical removal of the portion of the breast containing the tumor, along with a sufficient amount of surrounding tissue with the goal of establishing cancer-free margins. Lumpectomy is almost always followed by radiation therapy.</p>		<p style="text-align: center;"><b><u>Mastectomy</u></b></p> <p>Surgical removal of the entire breast, with or without nipple conservation. Most patients who undergo mastectomy do not need radiation therapy.</p>
<p style="text-align: center;">Equal</p>	<p style="text-align: center;"><i>Chance of survival</i></p>	<p style="text-align: center;">Equal</p>
<p style="text-align: center;">3-5%</p>	<p style="text-align: center;"><i>Local recurrence rate</i></p>	<p style="text-align: center;">2%</p>
<p style="text-align: center;">15%</p>	<p style="text-align: center;"><i>Risk of positive margins needing re-excision</i></p>	<p style="text-align: center;">0%</p>



<p style="text-align: center;"><b><u>Sentinel Node Biopsy</u></b></p>	<p style="text-align: center;"><b><u>vs.</u></b> <i>(if your sentinel node biopsy is positive, you may need an axillary dissection)</i></p>	<p style="text-align: center;"><b><u>Axillary Node Dissection</u></b></p>
<p style="text-align: center;">&lt;2%</p>	<p style="text-align: center;"><i>Risk of numbness, seroma, or lymphedema</i></p> <p style="text-align: center;"><small>Sentinel lymph node biopsy</small></p>	<p style="text-align: center;">15%</p>